

# *Welcome to Your Designer Planet!*

Vol. 1, No. 5, January 2006  
Published by: The Blue Room Consortium, Santa Fe, New Mexico

Written by: Richard Leviton ©2006  
Subscriptions: 12 issues for \$72  
Correspondence: [blaise@blueroomconsortium.com](mailto:blaise@blueroomconsortium.com)

## **Taking the Earth in for Maintenance—Your Monthly Guide**



---

### **This month's highlights...**

#### **LITURGICAL CALENDAR**

6<sup>th</sup>: Epiphany  
17<sup>th</sup>: Dark Grid Mardi Gras  
21<sup>st</sup>: Big Fish Day  
29<sup>th</sup>: Father-Hill Day

5<sup>th</sup>, 10<sup>th</sup>, 15<sup>th</sup>, 20<sup>th</sup>, 25<sup>th</sup>, 30<sup>th</sup>  
On-Going—The 72 Names of God

#### **RESEARCH REPORT**

The Origin of the Dark Grid in Atlantis

#### **GEOMANTIC HIGHLIGHT**

National Omphalos Points

## EPIPHANY



**Date:** January 6.

**Event:** Every year since about 4,000 B.C. the cosmic Christ uses this day to tune into the Earth in real-time, allowing a rebirth of the Christ Light or Christ Child on the planet and in humanity. Each year a different geomantic site is pre-selected as the prime receptor node for this infusion.

In Orthodox Christianity, and among the Anthroposophic circles of Rudolf Steiner, January 6, known as Epiphany, is still celebrated as the true birthday of the Christ, the date of His arrival on the Earth. Although the mass of Christian humanity observes the birth of Christ on December 25, other than the wide-scale participation of people in this belief and its myth, it is geomantically an empty event. The actual date when something happens in real-time for the Earth is January 6.

The word Epiphany comes from the Greek *epiphaneia*, which means “manifestation,” as of the Light, a showing forth of the Light of Christ. In traditional Christian belief, the Christ made four appearances on this date, though not all the same year: to the shepherds; the three Magi; his baptism in the River Jordan; and his first miracle, turning the water to wine and the manifestation of his glory performed at the wedding at Cana in Galilee. The Eastern Orthodox Church adopted Epiphany on January 6 as the date of Christ’s birth as early as the 3<sup>rd</sup> century A.D., and the Feast of the Epiphany was among its three principal, annual religious festivals, the other two being Easter and Pentecost. Originally, the Eastern Church celebrated Epiphany as the baptism of Christ, then the Roman Catholic Church changed the emphasis to his appearance to the traveling Magi.

European folk custom commemorates the build-up from roughly the winter solstice to Epiphany in the form of the 12 Days of Christmas, culminating on Epiphany Eve, an event called Twelfth Night. In its “pagan” obser-

vance, the 12 days represented a time of merriment, revelry, and festivities. For the Christians, they marked an extension of Christmas, December 25, as a two-week religious event, from Nativity to Epiphany, which marked its end. Ironically, conventional Christianity closes the Christmas season on the day it actually begins in geomantic real-time, thus assuring the faithful will be out of alignment with the Earth event and out of congruence with the actual advent of the Christ Light on Earth.

Although Epiphany is couched in Christian terms, as a geomantic event effecting the entire planet, it is dogma-free. Participation in it requires no allegiance to Christianity or for that matter to any religion or spiritual system. The planet receives an authentic infusion from a very high, pure source on this day, and it has a wonderful leavening effect on consciousness.

Since approximately 4,000 B.C., the Christ has focused His Light on the entire Earth for a week, starting on about January 3, peaking on the 6<sup>th</sup>, and winding down by the 9<sup>th</sup>. The intensity of the Christ focus follows the classic parabola shape, with January 6 being the high point. Each year a different location is chosen in advance to be the prime receptor for this Light. This means, in the history of the Earth, by the Epiphany of 2006, 6,006 different geomantic nodes have received the focus and still transmit the Christ. It’s as if the planet is pock-marked with 6,006 “meteor hits” from the cosmic Christ, each meteor like a knock on the door of the heart. Typically, the location for the next Epiphany is not revealed by the spiritual world until within a few months of the event.

The Epiphany focus for 2006 is Puerto Vallarta, Mexico, a port city and resort location on the western coast of Mexico, at close to the same latitude as Mexico City. Puerto Vallarta has one of the world’s largest bays. It is known as *Bahia de Banderas* (“Bay of Flags,” from when the Spanish were greeted in their ships by thousands of na-

*The word Epiphany comes from the Greek epiphaneia, which means “manifestation,” as of the Light, a showing forth of the Light of Christ.*



## EPIPHANY

tives waving colored flags) and as *Bahia de los Jorobados* (“Humpback Bay,” named after the humpback whales seen there), and it measures some 25 miles from north to south, 20 miles from the edge of land to the open ocean, and features about 40 miles of mountain-ringed coastline.

The Huichol Indians once called the area surrounding the bay *Ciutla*, which means “feathers and grassland;” around 1850, Mexicans began settling in this area, and the town received its first name, *Las Penas de Santa Maria de Guadalupe*, given it by Guadalupe Sanchez Torres, a salt-shipper from Jalisco who moved his family there. As he arrived on December 12, which marks the traditional celebration day for the Virgin of Guadalupe (an aspect of the Virgin Mary), Torres named the town after Catholicism’s chief saint. By 1900, Las Penas had 2,000 residents, and in 1918, it was renamed Puerto Vallarta, after Ignacio Vallarta, once a governor of the State of Jalisco. Today it is a city of about 250,000 people.

Although legend or folk custom does not record any official “sacred sites” within Puerto Vallarta, the entire city and most of the *Bahia de Banderas* in fact is a sacred node in the form of a landscape zodiac. One of the planet’s 432 landscape zodiacs, this feature measures about 20 miles across, consisting of two equal-sized circles with a small overlap (like a *vesica piscis*). Inside each circle is a hologram of stars and constellations, an array of the galaxy meant for human interaction. The whole double-ecliptic zodiac is topped by a massive dome of Light about 40 miles wide, putting about half the bay and all the city and its environs within its protective spiritual aegis.

In practical terms, the Christ Light focus for 2006 will be “beamed” into Puerto Vallarta’s landscape zodiac specifically at the place where, in the generic energetic template underlying the zodiac (and all sacred sites and Light temples in the landscape) where the Solar Logos and Cosmic Logos merge. This feature sits under the

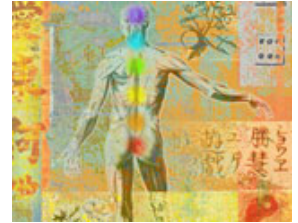
*vesica piscis* overlap of the two zodiac circles where the neighboring constellations of Pisces and Aquarius sit. The generic template consists of an array of the 72 minor and 9 major chakras (81 in all); at the place where the 4<sup>th</sup>, or heart, chakra meets the 3<sup>rd</sup>, or solar plexus, center, the Solar Logos and Cosmic Logos have a special extruded extra point, and this is where the 2006 Epiphany beam will register.

Here are some general impressions of what happens on Epiphany and during the three days before and after: The Christ Light comes into the site as a twofold beam; on the outside, a gold beam, representing the Christ-Logos; inside this, a scarlet beam, representing the Light of Ray Master Jesus. Together they comprise the Light of Jesus and Christ, better known as Jesus Christ. Ray Master Jesus’ scarlet light (the Ray Masters work through the Great Bear constellation) helps to step-down and ground the Christ Light for both the galaxy and our planet as it is entering our galaxy from an extra-galactic, cosmic space and is thus a highly potent, super-rich energy.

The yearly Christ infusions were begun on Earth some 4,000 years before the actual material advent of the Christ here to inculcate love, forgiveness, and the experience of the Logos as the cohering, connecting force in the universe. To the Greeks, the Logos was the world-principle and world-process, the knowable rationality of the universe; it was also a pervasive connectivity among all created things, as well as the primal, instigative Word by which Creation began and is continuously supported as memorialized in the phrase: “In the beginning was the Word [Logos].”

Over time, the Christ Light “beams” acted as a kind of thread to weave a Christ Light grid around the planet so that one day this grid (an adjunct to the classic Light grid

*(Continued on page 4)*



*Although legend or folk custom does not record any official “sacred sites” within Puerto Vallarta, the entire city and most of the Bahia de Banderas in fact is a sacred node in the form of a landscape zodiac.*



## EPIPHANY

or Light body of the Earth) could hold more Light. This would make it easier for people, should they wish it, to emulate the Christ and assimilate it into their psyche and energy fields. We could usefully picture the 6,005 previous sites of the Epiphany focus as comprising a woven Christ Light grid.

The double-stranded Christ beam enters the primary reception site like a massive laser light focused on the one point. This site (Puerto Vallarta) soaks it up, then through this node's geomantic connections with other sites, the Christ beam starts to stain the Earth grid as if it were gold-red ink and the grid a kind of white blotting paper. Or we could see it in terms of a vast planetary capillary system whereby the "roots" of innumerable sacred sites take up the Christ Light like much-needed water. All the "roots" around the Earth ecstatically take up this heavenly water. The Christ Light feeds the Earth with love, truth, Light, and consciousness, and it also feeds all humans who want to sip of this nectar through participating in the infusion through local holy sites. In other words, once the Christ Light starts being distributed throughout the Light grid of the Earth, you can use any sacred site as a "straw" to drink it.

Thus, anywhere you go on this day, anywhere you stand on the Earth, you are within the Christ Light. One of the aspects of the Christ is best explained through the Vedic perception of Vishnu (the Indian Christ and one of Hinduism's trinity, the deity who maintains and preserves the Creation): Vishnu pervades and permeates all of cosmic space; Vishnu is everywhere throughout spacetime. The classical Greeks and early Christians used a similar term, Logos, to indicate how the Christ coheres, organizes, and suffuses all of reality like a distributed magnetic center.

From the viewpoint of the angelic realm, notably of the Ofanim, the Logos comprises all the empty *spaces between* the stars in the cosmos. The spaces between all the points of Light (and

this is true at all levels of expression, including the bodily and atomic) comprise the Body of the Logos. The Ofanim note: "The Logos is the empty space between things. The Logos is also the living Word, which is synonymous with truth; truth is consciousness, consciousness is trust, and trust is faith in the living Word of the Logos. The Logos is the Word made manifest."

As an angelic order, the Ofanim are implicit in the Christ revelation and Epiphany, for they were perceived as Garuda, the magnificent eagle mount for Vishnu (Christ), in the Vedic myths and as the uniquely-appearing Star of Bethlehem in the Judeo-Christian account of Christ's birth. As a brilliant but tiny pinprick of absolute Light within every human, the Ofanim are implicit in every move we might make towards the Christ, and they willingly serve as mount and guide to all who wish to approach the Christ.

The Epiphany is also a galactic event. Today, the Christ enters the House of Stars, our galaxy. The Christ beam enters the Milky Way galaxy through the mouth of Canis Major (see Dog-Star Day, December 31, in the December 2005 issue). It starts to infiltrate the galaxy as if it were an inflated balloon or sack, and through its capillary system, it gets distributed throughout the galactic interior, filling all the spaces between the stars. Everywhere you go in the galaxy, as on the Earth, you stand in the Christ Light this day because it is implicit in the *weave* of galaxy and planet, better known as the star grid and Earth grid.

The Christ or Logos is already implicit in the weave of either system, but on Epiphany, it gets amplified, enriched. The weave gets stained with the brilliant gold-scarlet Light as the "spigots" of the Logos open wide and "flood" the world. By analogy, it is like misting a complex spider's web with gold-scarlet paint: you suddenly become aware of the web when it gets highlighted with paint. The weave of both galactic and terrestrial Light grids get an impulse this day to realign with the truth, the love, the Light, trust, faith,

*(Continued on page 5)*

*The Christ or Logos is already implicit in the weave of either system, but on Epiphany, it gets amplified, enriched.*

## EPIPHANY

and reality of the Logos that holds it all together. The inherent rationality and spirituality—the Dharma—of the weave get accentuated. Today, the Great Connector, the Logos, is revealed.

Through Epiphany, we are afforded a chance to perceive another level to the “sacrificial” aspect attributed to the Christ, but not in the sense of Jesus Christ expiating human “sins.” Rather, we appreciate the true Christ sacrifice is to hold the Light of the Absolute, of the Father (God), in the lower worlds, outside the perfect realm of absolute, undifferentiated Light, which the Qabalists, for example, call the *Ain Sof*. The Christ sacrifice, the true gift of the Logos to all the lower, created worlds and their sentient life forms, is to hold the Light, be the weave, of the grid outside of the Supreme Being, to be the Son of Light as an offering in love to all the universes of Creation. The Christ offers his Body of Light as a Eucharist to the entire cosmos: here, eat of my Body of Light. Suffuse and enrich your consciousness with this. To refresh a term we take for granted, Epiphany marks the *mass of Christ*; Christmas is really a *Christ-mass*, a galactic service for the Logos.

This is more of a poetical rather than literal image, but in a sense you could see a diffused, anthropomorphic expression of the Christ-Logos as a figure implicit within the weave, in all the spaces between the star grid lines. This is the watermark in the paper, the face in the shroud, the Sun in the spacetime and planetary weave, and today as the Christ-Logos beam flushes through the grid at both levels, it is like blood flushing the face, giving it life.

Examples of previous Epiphany focus sites since 1989 include Bimini Island, near Miami, Florida; Rondablikk, Rondane Mountains, Norway; Sedona, Arizona; Santa Fe, New Mexico; Mount Temehani, Raiatea, French Polynesia; Teotihuacan, Mexico; Mount Shasta, California, and most recently, Medellin, Colombia (2005). All sites of a previous Epiphany focus are highly desirable pilgrimage destinations as they still

carry some of the charge.

**Exercise:** While Epiphany takes place on January 6, you may participate in its buildup beginning January 3, and continue with its build-down until January 9, using the same exercise. Ideally, if you can situate yourself in Puerto Vallarta or the site of a previous Epiphany focus, this would be excellent; however, that is not necessary for you to participate in this global infusion. Generally, the Epiphany energies are strongest in the morning, so if you can participate before noon, this is good.

Find a quiet spot, in your house, on your property, in a park, on a hill, at a sacred site, or any place you are fond of, and allow yourself to become still, in breathing, emotions, and thought. Place around yourself, at a distance from your body of about 4-5 feet, a brilliant gold flame that rises up out of the Earth and surrounds you and rises to a point high above you. Inside this, place a scarlet flame, about 3-4 feet from your body, and allow this to flame up from the Earth, to surround you entirely, and to burn within the gold flame. Put your attention, without effort or strain and with a gesture of love and ease, on these two flames, gold on the outside, scarlet on the inside, for 10 minutes or so.

Affirm your intention to participate in the Christ Light infusion taking place around the planet and to be a wakeful point of grounding and distribution for it for the benefit of the planet and humanity. If you feel inspired to, transfer some of your attention to Puerto Vallarta in Mexico, to help ground the Christ Light there as well. You need not know what this city looks like, and you need not know anything about out-of-body or astral traveling, for this is neither. The angelic realm will help you move a little

*(Continued on page 6)*

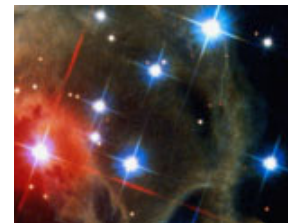


*Through Epiphany, we are afforded a chance to perceive another level to the “sacrificial” aspect attributed to the Christ, but not in the sense of Jesus Christ expiating human “sins.”*



## EPIPHANY

portion of your Higher Mental Body to the desired location to be of assistance in grounding the Christ without any sacrifice to your sense of groundedness.



## DARK GRID MARDI GRAS

**Date:** January 17

**Event:** Although I borrow the term “Mardi gras” from a different context, there is actually some overlap in time. Mardi gras, the carnival time before Lent, begins on January 6 with parades and events and culminates this year on February 28, 46 days before Easter. On January 17 every year certain inimical interests on the Earth stage their own Mardi gras throughout the planet’s Light grid, what I call Dark Grid Day.

Authors Michael Baigent, Richard Leigh, and Henry Lincoln first drew modern Western attention to this date in 1981 in their popular book, *Holy Blood, Holy Grail*. In the course of explicating anomalous events at Rennes-le-Chateau in France to do with Jesus, Mary Magdalene, secret societies, and a possible blood lineage of the Christ, the authors noted the curious coincidence of January 17 throughout the centuries with key events, births, deaths, murders, and other political or religious events. Their implication, in this and later books, was that somehow January 17 was a date set aside by certain arcane brotherhoods to accomplish goals or to make subliminal, symbolic statements.

A casual survey of events happening on this date tends to support (though it doesn’t prove) the suspicion. Earthquakes, for one: On January 17, 1994, the Northridge, California earthquake struck; on January 17, 1995, the Great Hanshin-Awagi (China) and Kobe (Japan) earthquake hit. Soon after, in a gesture both appropriate and chillingly on point, the Meguro City Office in Tokyo, Japan, declared January 17 to be

“Disaster Prevention and Volunteer Day” in that country, and January 15-21 as “Disaster Prevention and Volunteer Week.”

So what is it about January 17, also known, literally, as Fat Tuesday (that’s what Mardi gras translates as)? The first thing to note is that regardless of whether overt acts are committed on this day, such as the ones enumerated above, actual activity takes place on the Earth with ramifications for humanity and our quality of life and reality.

For a more detailed perspective on what I call the dark grid, refer to the accompanying article below under Research Report. For here, let’s say the dark grid is an artificial, toxic overlay on the planet’s original Light grid; analogically, it is a cancer that has metastasized across the Earth sinking numerous fibrous black cords into the planet through its seats of government, power, religion, and finance. Although it is supported and validated by outside interests, what we would call extraterrestrial or alien, it is fundamentally “home-grown” and nurtured by interests and powers on the Earth whose focus is the limitation of the Light, truth, and human freedom and spiritual evolution. The dark grid is the conduit for the Antichrist, which is not so much a singular person or being but rather a diffused influence against the Christ.

On January 17 every year the dark grid’s influence on human and planetary reality is amplified. You might think of this as turning

*(Continued on page 7)*

*The dark grid is the conduit for the Antichrist, which is not so much a singular person or being but rather a diffused influence against the Christ.*



## DARK GRID MARDI GRAS

up the volume on a radio, except it's a radio we normally do not hear, even though its "music" has a powerful subliminal effect on us. On Dark Grid Mardi Gras, all the implicit, embedded dark influences get strengthened in a kind of planet-wide extremely low frequency pulsing. Picture thousands of dark thick cords inserted into geomantic power spots around the planet; now picture these throbbing, enlarging, almost thumping as they pump psychic toxicity into Earth reality. The trouble is it's so subtle it is very easy to never notice.

The intent is just that: for people to accept planetary reality as it is, as inevitable, irresistible, and ineluctable, something never to be questioned because "that's the way things are." What things? War, conflict, brutality, fear, violence, poverty, atheism, intolerant fundamentalist ideologies, lies, deception, subterfuge, self-aggrandizement, materialism, the apotheosis of science, the denigration or ridicule of the feminine, intuition, and the psychic or otherworldly. These are all tendencies planetary reality can take, or not take, but the dark grid constantly strengthens the tendency for reality to be flavored this way.

On Dark Grid Mardi Gras, the dark grid cords pulse with the reaffirmation of the planetary reality tendency the Antichrist prefers for Earth, not what each of us, in the clarity of our consideration, would choose, do choose. Alien intelligences are involved, and pulse the dark grid cords with certain beams of information that, metaphorically, act like additional amplifiers or in electrical language, increase the voltage in the system. All of it validates restriction, limitation, truth manipulation, and the reduction of the flow of Light and truth through the Earth's original, God-granted grid.

What to do? For one thing, don't fight it or resist it; that only strengthens the dark grid. It is important to be aware of the situation, to be vigilant in your awareness on this day for seductive subliminal influences. It's important also to examine where, in a dimly lit portion of your

psyche perhaps, you might be in support of some of the agenda or tendencies being put forward by the dark grid.

**Exercise:** This exercise is offered by Ray Master Saint Germain (*Sanctus Germanus*, "Holy Brother"), one of the 14 Ray Masters from Ursa Major who are prominent within the Great White Brotherhood, a celestial "United Nations" of Ascended Masters that protects and nurtures the unfolding of the Light on all planets in the galaxy.

Visualize a brilliant lilac flame around you. It begins at the core of the Earth, rises up around your body at a distance from you of about five feet; it then rises and burns high above you. It is a dynamic, constantly burning pale violet flame, and it will start to consume some of the darkness, toxicity, influence, and unconsciousness that may envelope you today in response to Dark Grid Mardi Gras. Let this burn around you all day, but concentrate your attention on it initially for ten minutes, then revisit for another couple minutes every hour or two. In addition, picture a golden rose and write the word *Hello!* on it. Offer this to the egregor of your country, the national watcher-protector angel who oversees the landscape and people (see below, under Geomantic Highlight). Ask the Supreme Being to give this angelic regent of the nation a blessing and healing, so that it might release a layer of dark grid programming today too.



*The intent is just that: for people to accept planetary reality as it is, as inevitable, irresistible, and ineluctable, something never to be questioned because "that's the way things are."*



## BIG FISH DAY

**Date:** January 21

**Event:** This calendar event, despite the whimsical title I've given it, has sufficient celestial gravitas to warrant our attention and participation. It involves Fomalhaut, a first magnitude star in the constellation Piscis Australis, or the Southern Fish, located just south of Capricorn and Aquarius on the ecliptic in the portion of the galaxy known in star lore as the Waters.

Fomalhaut sits at the mouth of the fish; in fact, its name in Arabic, Fum al Hut, means just that: the Fish's Mouth. Arabic astronomers also called it *Al Hut al Janubiyy*, the Large Southern Fish; the Babylonians equated it with their fish-god Oannes, the Syrians with their equivalent known as Dagon; and to the Egyptians, it was Oxyrhynchus, as they believed it was the fish swimming in the celestial River Nile that swallowed the phallus of Osiris. Its proximity "downstream" to Aquarius, the Water-Bearer, as well as the Goat-Fish, or Lord of the Deep (the original reference to Capricorn), led star myth-makers to construe Fomalhaut's function as that of perpetually taking the overflow of water from Aquarius' huge water jar, which he is always in the act of pouring. Others say Fomalhaut, or the entire Southern Fish, saved humanity and the world during a deluge by swallowing the flood waters. Thus, to the imagination of the ancients, the Southern Fish is always drinking the cosmic stream.

As a star, Fomalhaut sits about 25 light years from Earth; its luminosity is about 16 times greater than our Sun; its mass about 2.3 times and its diameter 1.7 times bigger than the Sun; and it's estimated to be about 200 million years old (much younger than our Sun), and is so hot and burns so bright, it may well exhaust its internal hydrogen supply and burn out in a billion years. As it stands now, Fomalhaut is the 18th brightest star in the galaxy, from Earth's perspective, and it is sometimes called the Solitary One, as it presents itself as a solitary beacon in a patch of galactic sky without other bright stars.

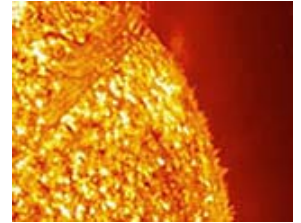
In Persian star lore, Fomalhaut was one of the four Royal Stars; the others included Aldebaran in Taurus; Regulus in Leo; and Antares in Scorpio. These formed a great cross in the galaxy, with respect to the Earth's viewpoint, and the

four marked the two solstices and equinoxes about 5,000 years ago. Fomalhaut, for example, once marked 0 degrees Capricorn in about 2,582 B.C., which means its prominence coincided with the winter solstice and the start of the astrological month of Capricorn. Thus, Fomalhaut was honored as the Guardian, Watcher, or Protector of the galaxy from the South; it was a seasonal anchor point for the heavens. Now the Watcher of the South culminates (when it reaches its exact midheaven position) around midnight at the end of August. Fomalhaut, and the other three Royal Stars, no longer mark the seasonal turning points due to the Precession of the Equinoxes, though at certain points during the Grand Year of 26,000 years, when the Earth passes through all 12 zodiacal signs for 2,100 years each, they once again stand at the cardinal points.

Some years ago while interacting with a landscape zodiac (a terrestrial star map, templated as a hologram over a variable stretch of landscape) with some colleagues, we collected impressions of the Big Fish. None of my associates had any knowledge of the star, either astronomical or mythic. One person remarked she saw a river and a fish in it the size of the river. "The river flows into the open mouth of the fish, over its lower jaw, and then through its body. This feels like Jonah entering the whale. The inside of the fish is so vast, it is a blackness of the space between the stars." Another companion said: "The fish fills all space at this point. It is prolific, laying thousands of eggs, like stellar caviar, and these look like crystal balls. The river is seeded with this caviar, this roe of Light." A third saw "lots of iridescent yellow and green lights in different shapes, possibly like fish scales. Then a doorway in a wall, but perhaps it is a fish's open mouth. This is the doorway to higher consciousness."

What happens on Big Fish Day? Here are some impressions: It is as if the entire Earth is swallowed up by Fomalhaut, the big, open mouth of the Southern Fish, and brought inside a vast, empty, golden cathedral space. Analogically, it is like taking your car in for a tune-up and driving it into the garage. As my

*(Continued on page 9)*



*What happens on Big Fish Day? Here are some impressions: It is as if the entire Earth is swallowed up by Fomalhaut, the big, open mouth of the Southern Fish, and brought inside a vast, empty, golden cathedral space.*



## BIG FISH DAY

companion said, it is like Jonah and the whale, but here Jonah is the Earth and the whale is the Southern Fish. An alternative way to view this is to say Fomalhaut, as a regal star-being of vast extent and consciousness, sends rays across the galaxy to envelop the Earth so that, experientially, it is as if the planet is brought inside Fomalhaut, swallowed up and pushed down to the fish's belly.

The Earth will be inside the big fish for this day, in a moment outside of normal time and in a kind of Dreamtime. Gaia, the master landscape angel and spirit of the Earth, and her innumerable handmaidens (the landscape angels) will enjoy the immersion in this deep inner sea. To use a sports' analogy, Big Fish Day is a timeout for Gaia and Her team. It will be a bit like being cucumbers in a pickling brine, but the brine is the water of truth, Light, and consciousness, constantly pouring from Aquarius' water-jar into the open mouth of the Southern Fish.

Fomalhaut, as a magnificent celestial being, looks a bit like the Babylonian perception of Oannes, a fish-head and human torso, but the two images flip back and forth, and functionally what is important is the open mouth aspect. On his brow, Fomalhaut wears a gold pendant studded with perhaps eight spheres of Mother-of-Pearl. This symbolic image opens the door to a perception of what Fomalhaut will do to the Earth on this day: The planet gets coated with millions of spherical "fish eggs," as my companion saw years ago.

These look like the spherical or crystalline mother-of-pearl drops on the gold pendant, but now they are adhering to the planet just a little off its surface. Basically, the Earth, inside the big fish's belly, is the recipient of this celestial caviar. Each sphere is perhaps 50-100 feet across and hovers, almost bouncingly, just above the landscape like a lightly tethered balloon. I see one, for example above Santa Fe Plaza which is downtown in this small State capital city in New Mexico. The sphere is translucent, shiny, pale white; seen from the outside, it turns into a white flower bud, a thick, plump one, like a peony. It opens, revealing a blossoming flower of long white petals. I step inside this same sphere and watch the process again: the petals rush to open, and reach upwards in a kind of celestial tropism

towards Fomalhaut, like pursed lips ready to drink of a water fountain. What they seek to drink is the dew of Aquarius which settles gently on their white outstretched tips. It is the misty rain or sprinkling of Aquarian "water."

Functionally, this means Fomalhaut helps the Earth prepare to receive the Aquarian infusion of higher consciousness. As my third friend rightly observed, the fish's mouth, when open, is a doorway to higher consciousness. Aquarius, being the next astrological sign our planetary reality is gradually moving into, certainly represents a higher stage of consciousness to Pisces, which we have been immersed in for some 2,100 years. It's "higher" in the sense of being the next step in the astrological cycle, and thus it's newer and fresher. Fomalhaut engorges the Earth to deposit its "caviar" across the planet to enable Gaia, her handmaidens, and us, to be more receptive to Aquarius. January 21 is on the cusp of Capricorn and Aquarius, so the timing is exact.

**Exercise:** Find a still place for the exercise sometime during the day. Visualize a mother-of-pearl sphere over your head; make the sphere about 10 feet across. Either lower it over your body or see yourself rise up to enter it; allow it to change shape and become a white flower bud whose petals start to open and reach towards the dew of Aquarius settling on them. Sit with this impression for 10 minutes.



*The Earth will be inside the big fish for this day, in a moment outside of normal time and in a kind of Dreamtime*



## FATHER-HILL DAY

**Date:** January 29

**Event:** This event is one of the year’s more subtle ones. First, three items of clarification. The term “Father-Hill” derives somewhat from the nomenclature used by writers on megalithic landscapes where they refer to Mother-hills, especially in England. These are hills, often rounded or feminine-looking, or even seemingly artificial, either associated with various goddesses or believed to represent parts of her landscape body, notably the belly or breasts, as in the several prominent recumbent deity figures noted throughout England. The term Father-Hill, then refers to the “male” aspect of deity, specifically the Supreme Being, the Great Father.

The second item to clarify is the symbolic aspect of a hill. In the Vedic interpretive system, a hill (and this can apply to mountains as well) symbolizes formal existence, especially at the physical level. “Our conscious existence is a hill (*adri*), with many successive levels and elevations, *sanuni*; the cave of the subconscious is below; we climb upwards towards the godhead of the Truth and Bliss where are the seats of Immortality.” A mountain symbolizes virtually the same, with the added nuance that the mountain rises from the “bowels of earth to the back of heaven”—the sense of the mass and massiveness of the mountain being grown out of the Earth and upwards. (Sri Aurobindo, *Vedic Symbolism*, Lotus Press, 1988: 33, 49)

The third item for clarification is that ultimately everything outside in the Earth’s array of sacred sites and their subtle, visionary aspects (Light temples) mirrors something inside us. This includes Light Cities of the gods, dragon and dragon eggs, and chakras, as well as all the rest of the wild spiritual architecture that comprises our Earth. Hills and mountains, then, mirror the human cranium which at least poetically, is like a rounded hill atop the landscape of the body. The intent of Father-Hill Day is to “show everyone a little cave,” says the Supreme Being, who is the prime director of this day.

Picture a hill, especially one of the geomantically prepared ones, common in the British Isles, such as Silbury Hill in Wiltshire, that seem purposefully raised off the land (possibly even physically altered, or some say, human-made in the

first place) as if to make all of it a sanctified hill-altar. Now picture the Supreme Being settling a golden V-shape down into this hill. An overlap is formed between the physical hill and the downward-facing golden V; in abstract terms, it is as if you took two V-shapes, one with the point facing downward, the other inverted. The overlap they form is a diamond shape. Even though hills and mountains do not look like inverted Vs (pyramidal or tetrahedral, technically), that shape is implied or can be extrapolated.

My impressions from the Supreme Being on this matter are as follows: the overlap or diamond-shape is the key. It is a spiritual cave created in a hill when a Father-Hill of spirit overlaps a physical hill of matter. So it is a special in-between zone of spirit and matter. The cave is “the little surprise inside each Hill I visit, My way of putting a little crown on every hill on Earth, on every aspiration of matter to rise towards Me.” Or as the Vedas put it, it is for every formal rise of matter through consciousness to reach the Supreme Being as the Source of Creation.

I mentioned that outer landscape features mirror inner spiritual ones. What we have inside us that corresponds to the hill is the cranium, the entire head, but let’s think of this energetically, in terms of the 6th and 7th chakras, or the higher consciousness centers at the brow and top of the head. Approximately midway between the crown chakra and the 6th is an arcane or minor chakra (one of 72 in the body) that Hindu yogis call the *mani-pitha* chakra, which means the center or spinning wheel of the “island of gems (*mani-dvipa*)” or “altar of gems (*mani-pitha*).”

If you were to picture your 6th chakra as a rectangular room occupying the center of your head and reaching from your forehead to the back of your skull, then the *mani-pitha* chakra, when it is apparent, appears to be about midway through the “room” and resembling an effervescent, amber, diamond-shaped doorway. Hindu yogis describe this chakra as a jeweled altar. “It is a triangle within which is the sacred altar of jewels (*mani-pitha*). Here lies the Jewel-Island (*mani-*



*My impressions from the Supreme Being on this matter are as follows: the overlap or diamond-shape is the key.*



## FATHER-HILL DAY

*divya*), surrounded on all sides by the Ocean of Ambrosia (*amrita-amava*).” At the top of the triangle is the bindu, a primal and singular point “whence manifestation begins.” (Alain Danielou, *Yoga. Mastering the Secrets of Matter and the Universe*, Inner Traditions, 1991: 150)

Here is another way to picture this: let’s say you put a lot of your attention on the top of your head, as if you were standing there, or, if your body is a house, you climbed up on the roof. You find yourself standing in a powerful golden fire; it surrounds you as it burns upward, and it seems to form a V-shape off the top of your head, rising upwards. Now, this golden V-shape settles down through your head to the top of your palate or the base of your skull. This creates an overlap between your physical head and the golden V. The overlap is basically a diamond-shape, amber in hue, and this is the “little cave” the Supreme Being referred to; the gold V is the Father-Hill entering matter to create it.

Let’s picture the same thing out in the landscape on your favorite hill, or perhaps one of the hill-altar types like Silbury mentioned above. Standing on the top of the hill, visualize that first, your body becomes very large, giant; then it slowly sinks into the ground so only your head is above ground. Now expand your head to be the size of the hill, and then a bit larger. Into this hill comes the golden-V, the Supreme Being’s golden crown, or Father-Hill. Or perhaps you visualize the upward-rising golden V on the top of your head again, and this results in the same thing: the special spiritual cave is made.

Let’s remember the essential equation that the outer landscape hills mirror the inner cranium, and the Father-Hill is an energy that enters to create a special sanctified place in between the physical and spiritual. We already have this special place, the *mani-pitha* chakra, but our job is to help the physical landscape gain it too.

Everything I’ve described so far is set-up for the actual event. The purpose of this cave in the head is to enter it and get familiar with the place. To adapt the familiar cliché, this is bringing Moses to the mountain and bringing the mountain to Moses. The Moses analogy has another nuance, for let’s remember that the biblical tale says Moses received the Tablets of the Ten Com-

mandments from Jehovah atop the holy Mount Sinai. Perhaps he was instead in the cave inside Mount Sinai, the cave being the generated Father-Hill one. Although conventional biblical hermeneutics teaches us that the Commandments were codes of moral behavior, the Qabalists suggest they might have been a grammar for the mechanics of reality.

Let’s enter the cave. It seems you can enter from any side, even from the top and bottom points of the diamond. Initially, it seems like bubbly amber, then you see better, and it is a spherical cave studded with amber crystals and jewels, each a pyramid whose point faces upwards towards you. Alternatively, it is a rectangular room lined with thousands of crystalline slabs like tablets; the tablets are as if lined up against the walls or comprising the walls themselves. Whether it is a spherical cave with pyramidal outcroppings or a rectangular room lined with tablets or a triangular space with a jeweled altar, perhaps we can tolerate differing images. Clearly, this is a place of higher consciousness, and ultimately, what it looks like is a matter of interpretation.

You are meant to sit down here, in the center, and contemplate the space. What are these jewels or tablets in this “cave of the subconscious”?

It’s like being inside a computer chip, inside a terabyte of information, within a vast and complex architecture by which realities are made and run. The tablets or jeweled pyramids represent the complexification of mental structure. This place is the intelligent interface, the processor, between spirit and matter, the workshop of the bindu. The Supreme Being, perhaps whimsically, whispers these are “notes to Myself.” Ideas for reality, possibilities, experiments, codes, protocols, formulae, software programming—one has to scrounge around for suitable metaphors here.

All of this has something vital to do with the planet’s Higher Mental Body, a layer of mentation that perhaps is what Catholic philosopher Teilhard de Chardin meant by



*All of this has something vital to do with the planet’s Higher Mental Body, a layer of mentation that perhaps is what Catholic philosopher Teilhard de Chardin meant by the noosphere.*



## FATHER-HILL DAY

the *noosphere*. He saw the evolutionary goal of the Earth to be the creation of a “single thinking envelope” and web of sentience around the planet that would produce the Omega Point, a singular human Mind. When we participate in Father-Hill Day and help the Supreme Being create these Caves of Spirit inside Hills of Matter, we help the Earth’s Higher Mental Body, for this is a layer, aspect, or sheath (the Hindu yogis called it a *kosha*) of the planet’s subtle form, and it needs stimulation like all the others.

One thing that can be said with certainty about this cave is that it is a serene sanctuary. Surrounded by the thousands of pyramidal amber jewels, I am reminded of Merlin’s famous Crystal Cave in the Arthurian mythos. Merlin often resorted to his Crystal Cave, for reflection, strategizing, rest, insight, and inspiration; it was a place of sanctity, retreat, and contemplation outside the crazy rush of the world. Similarly, this Crystal Cave or Jeweled Hill is a sanctuary outside of the world; as a minor chakra, it is in fact antecedent to the world, to the major chakras (including the 6th and 7th), and to all of space-time, having been created and filled long before the others.

The term “minor” can be misleading, for the 72 minor chakras are older than the 9 major ones. They were created first as a habitation for the Cosmic Logos and as carriers for the 72 Names of God known in Qabala as the *Shemhamforesh*. In mystical parlance, the Name of God consists of 216 letters comprising 72 permutations of three letters each. Each minor chakra sounds one of the 72 Names. So we might construe this Crystal Cave as an audience chamber with God. We might think of these Father-Hills and their secret caves as a “platform for an audience with Me,” the Supreme Being suggests. Thus, every hill becomes a place of revelation.

**Exercise:** The instructions are simple: Select a hill, either go in person and sit on it or visualize you are there; expand your head to include the hill and allow the Supreme Being to put a golden crown on its top, a golden V. Sit with this experience for 10 minutes.



*One thing that can be said with certainty about this cave is that it is a serene sanctuary.*



## READERS' COMMENTS

The Day of 3,000 Rivers on December 14 (see the December 2005 issue) in which the River-gods of Earth's many rivers received a validation and healing, generated some rich experiences and reader comments.

One participant wrote that she focused on the Truckee River which starts at Lake Tahoe in Tahoe City, California. She saw "a huge River-god with the colors of a seagull, white and gray, that I guess was from 20 to 100 feet tall at various times. He 'flaps' his wings as if he is a bird about to land; it is like fanning energy down the river. He has fairies working for or with him at intervals along the river. I send Love from Above through me like Niagara Falls and see the Truckee River 'light and sparkle' all the way to Pyramid Lake [in Nevada, where the Truckee River ends after a 125-mile course] where another Spirit takes over. I send love, gratitude, Light, and Reiki energy to the River-god and all he touches. He is thankful. I ask if this is enough time given to him. Never enough, he says."

Another participant focused on the Truckee River and wrote: "I have the impression of a towering, golden, angelic-like figure, perhaps 100 to 200 feet tall. The river and about a one-half mile extent on either side is part of his radiating influence, and the river flows *inside* his spiritual or Light body."

A third participant writes of her experience with the Rio Grande River-god in New Mexico: "I saw the river develop a 'spine' as if it had vertebrae, and numerous fountains popped up along its length, possibly out of these 'vertebrae,' as it flowed south towards Albuquerque. Then I saw a man in great regalia, such as a colored cloak, who waved to me in greeting. I knew this was the Rio Grande River-god."

It is always fascinating, even validating, to observe how the geomantic world responds to *Hello!* from people, or at least produces acts that coincide with human input. Over the period of about December 30-January 2, some rivers in northern California flooded their banks. These included the Truckee River in the Sierra Nevada and the Napa and Russian Rivers down in the flat part of California. Newspapers reported that the Truckee River was "raging," "turbulent," and running "high and fast" at 6,030 cubic feet

per second, and it had caused serious flood damage in Reno, Nevada, which it bisects on its way to Pyramid Lake. It hadn't run this high since the floods of 1997 when its flooding caused \$1 billion in damages. This time it crested as much as two to five feet above flood level. The Napa River rose five feet above flood stage, while the Russian River was close to 14 feet above flood stage at its highest.

Without being insensitive to the suffering and financial loss these raging rivers have caused people in California, let's look at this geomantically for a moment. From the viewpoint of the River-god, surely a river full to capacity of rapidly moving water is a wonderfully restorative event, a kind of affirmation of the river's purpose in the land and a strengthening of the reciprocal loop between physical river and River-god. Such life-force flowing across the land! It is also a detoxification and cleansing event to have this much water moving rapidly through a river channel, and by "channel" I mean both the physical groove in the landscape and the Light groove that matches it.

During this flooding period, I see the Truckee River-god rushing back and forth between the two lakes, accommodating the flooding, directing the water spirits (undines) who are present in great numbers. The raging river means, on the spiritual level, more of the River-god is present to permeate our physical reality; the river's theme is strengthened and more of it can seep through into human reality. Also, the River-god is strengthening the Light links between the two lakes. This circuit, and the two gates for the River-god, one at each lake, received a *Hello!* from a group participating in Michael-mass activities at Pyramid Lake on September 29, 2005, part of which was dedicated to affirming the geomantic importance of the Truckee River and its River-god.



*"I saw the river develop a 'spine' as if it had vertebrae, and numerous fountains popped up along its length, possibly out of these 'vertebrae,' as it flowed south towards Albuquerque."*



## NAMES OF GOD, ON-GOING

**Date:** January 5th, 10th, 15th, 20th , 25th, 30th.

**Event:** These six dates represent Names 3, 4, 5, 6, 7, 8. (Refer to the September 2005 newsletter for details on theory and participation.)

## Geomantic Highlight: NATIONAL OMPHALOS POINTS

This geomantic feature is of especial importance this month because it is directly involved with deprocessing the dark grid influence from countries. The essence of this feature is that it is the navel for a nation, including its people and landscape. Appropriately, many cultures around the world refer to a specific location in their country as the navel or center of the world, and the remarkable fact is they are correct. Another term I use to describe this feature is Energy Focusing Node for a nation's omphalos point is a point of reception, grounding, focusing, and distribution of celestial and angelic energies through the landscape.

Let's first look at some of the cultural attributions for navel points. In Ireland, the Hill of Uisneach is said to be that country's navel point; it is also the residence of Eriu, Ireland's national goddess of the landscape who gave her name to the island nation. Delphi in Greece was anciently honored as that country's omphalos and once even had a conical stone resident there to symbolize that function. In Peru, Cusco was believed by the Inca to be the navel of the world, for the original spelling actually embodies this perception: qosqo in Quechua means "Earth's navel." The exact foundation site for Cusco was called *cuzco cara unumi*, "uncovered navel stone." Easter Island, located 2,200 miles due west of Chile across the Pacific Ocean, has always been known by its natives as *Te-Pito-o-Te-Henua*, "The Center or Navel of the World." In Bali, the sacred mountain called Gunung Agung near Besakih was regarded as the world's navel, as was Mount Girzim in Palestine (Israel), Mount Kailash to the Bon of Tibet, and Tenochtitlan, the original foundation site in Lake Tezcoco of Mexico City in Mexico.

All of these attributions are correct, and it still leaves us another 64 sites around the planet about which the locals can rightfully claim it is the navel of the world, although it is more geomantically accurate to say the navel of their world, meaning their identity as a people (an ethnos) and their land. An ethnos means the factors that make the French *French* or the Irish *Irish*. As an analogy, we might liken an ethnos to a small difference in genetic code; take all 72 original ethnos expressions and express them as a singular being and you would have a revelation of a much larger, fuller, richer human, probably the archetype of the human design. Probably to make the planet a more interesting place in which to live, the singular human was fragmented into 72 partial expressions, each an ethnos with a landscape in which to express itself.

The Earth is a designer planet, and part of its original design called for 72 significant landmasses each to be the residence of an ethnos and to be superintended by a special protector-watcher angel called, variously, an egregor, a Tutelary Prince of the Nation, a National Angelic Regent, a National Deva, Logos of a Nation, and Guardian Angel of the Nation. For example, Ireland's "goddess" Eriu is a national egregor, the Logos of Ireland.

In a sense, each national egregor began as a generic empty angelic vessel; it came with programming specific to the ethnos it would administer, yet its content and information and even its appearance would be filled in over the eons through the life of the people

*(Continued on page 15)*



*This geomantic feature is of especial importance this month because it is directly involved with deprocessing the dark grid influence from countries.*



## NATIONAL OMPHALOS POINTS

and all the living creatures and other subsidiary landscape angels in the land. For example, France's egregor has assumed the shape of a rooster; Norway's the guise of a moose; and America's, the form of a golden eagle.

These are astral beings who look after a landscape and who have a specific area where we can say they are grounded. Eriu is grounded at the Hill of Uisneach; Norway's egregor is near Roros, an old mining town in the Rondane Mountains; and America's is in Western Pennsylvania, casting an astral shadow over some 50-100 miles of landscape. Paradoxically, were you to see a national egregor, it would also appear to be standing up in a form that might appear to morph between the generic angelic form it started with and the agreed-upon cultural guise its people created for it over the years.

In geomantic terms, where the egregor "stands" in the landscape is also the site of that landscape's Energy Focusing Node. Just as the umbilicus of a fetus is connected to its mother, a national omphalos point has an umbilical connection with the spiritual world from which it continuously receives sustenance in the form of Light, consciousness, energy, truth, and other celestial "nutrients." It then distributes these throughout the landmass for which it is responsible.

Each national omphalos point has an additional feature, one with a global implication. Each is a minor chakra within the planetary Light body of a cosmogonic figure called Albion whose ultimate function is to be the "husband" of Gaia, the spirit, goddess, and master landscape angel and egregor for Earth. Thus, the original 72 national omphalos points for the 72 original nations and their peoples are each a minor chakra in this global spiritual being called Albion. Obviously, there are more than 72 nations today, so more egregors have been assigned to handle the differentiated landmasses; these operate in addition to the original 72.

Further, each of the 72 minor chakras, at any level of expression, from global to within the human body, also express a Name of God. Judaic mysticism uses the word *Shemhamforesh* ("The Name of Four Parts") to indicate a complex mystical perception whereby the ultimate Name of

God is said to have 216 letters, each comprising a different three letter combination or Word (permutations of Hebrew letters), giving us 72 Names. All of these are part of the Complete Name of 72 Names and 216 letters. Each minor chakra expresses one of the 72 Names, and so does the landscape expression of minor chakras. Functionally, this means each national egregor, the national omphalos point, and the ethnos also express one Name, though obviously filtered through the particularities of land and human body, emotions, and psyche.

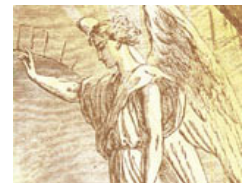
Let's put all this together in a single though big picture, using the egregor for the U.S. as an example. Starting at the top, you first have a massive over-arching energy canopy that I call a universe dome that covers 1/12th of the planet's surface. The planet has 12 of these gigantic domes. From the inside top of this universe dome comes a thread of Light that goes directly to and through the U.S. egregor into the ground. Other national egregors under this same universe dome also receive a Light thread. The ultimate source of this Light is the Supreme Being who commissioned the planetary egregors at the start of the planet and explained their task and in effect set their programming to match the intended ethnos and land particularities.

The Light thread from the Source passes through the national egregor for it to be appropriately filtered by the ethnos so that when it is grounded it carries the American, or French, or Irish folk vibration into that landmass. Again, the egregor may be perceived as both standing and as horizontal, casting a shadow of variable length across a stretch of landscape with geomantic nodes on the land that correspond to (or serve as access places for) its own hierarchical spectrum of consciousness, what we call chakras).

The national egregor in its pure angelic expression is perpetually singing the particular Name of God to its land and people. In a sense, that Name is its vibratory essence, its keynote. It is accompanied by a specific angel assigned by the Supreme Being to also always



*In geomantic terms, where the egregor "stands" in the landscape is also the site of that landscape's Energy Focusing Node.*



## NATIONAL OMPHALOS POINTS

sing that Name of God in Heaven; these are known as the 72 Angels of the *Shemhamforesh* in Qabala.

From this point, as it were, from under the egregor's "feet," innumerable yellow-tinged lateral lightning strikes radiate out across the land. Or we might describe it as a complex root system or capillary network. Through this system, the celestial nutrients are distributed to all the constituents within that landscape.

Here is another view of this generic structure as observed with the egregor for Germany, based on the observations of myself and a German colleague. Germany's egregor appears like a king in a dark blue robe and a brilliant necklace sitting on a huge chair of Light over all of Germany, though situated near its midsection, somewhere near Würzburg and the River Main near the Bavarian border. The egregor appears wise and friendly, and emits a sense of freedom, love, and knowingness. A huge cord of Light goes from either the egregor or his "throne" into the German landscape to ground his energy into the country.

All of Germany is "wired" into this big grounding cord through a network of geomantic connections that appear as lines of light, notably, red, blue, and green. The German egregor's consciousness is transmitted throughout the land through this network. Numerous landscape angels and benevolent spirit beings and even German ancestors and ancestral beings stand at the termination points of these light lines and ground the national egregor's energy into their localities. The information flow from the national egregor gets distributed through all the realms of Nature as well as all the natural features, such as lakes, mountains, rivers, hills, and valleys, working through the Nature Spirits. The German egregor is connected in with Gaia and the larger continental egregor for all of Europe and Asia, but also somehow with the other planets, the Sun and Moon of our solar system.

It is fascinating to see that the egregor also has living connections with numerous contemporary Germans who, on a soul level, have designated themselves as caretakers for the land and its complex geomantic pattern of connections with the egregor. Each of these living caretakers

has a special cord of Light linking them to the egregor; it is an extensible cord too, for such a person could be anywhere on the planet and yet still be intimately wired to Germany and capable of effectively interacting with its geomantic picture. The egregor cord or link appears to be to the heart chakra of the caretaker.

Each caretaker also has a place in Germany where their portion of the German folk soul (the *ethnos*) is grounded and held. This is a kind of personalized sacred site and should someone else take up the role of caretaker and this person retire from it, then this place would become theirs. Let's say, *hypothetically*, that the *ethnos* or German folk soul template is divided into 72 portions, with at least one caretaker responsible for each portion. This portion is grounded somewhere else in Germany, that is, not where the national omphalos point sits. If we picture the national omphalos point as a center, then the 72 portions might be seen as arrayed symmetrically and radially out from this center across the land, probably close to its periphery.

Coming back to the U.S. Eagle, the egregor appears to be standing on something. At first glance, it appears like a massive crystalline garlic bulb perhaps 2,000 feet across; its size will probably vary with the size of the country the egregor administers. The "garlic bulb" is a structured Light space; inside, it appears to have a central open area with many dozens of segments or chambers fanning out along the perimeter, somewhat like the ribbing on the underside of a mushroom. There are 288 chambers in all. This Light temple is the generic form of a national omphalos point, a kind of spiritual-geomantic mechanism for transmitting celestial energies filtered through the egregor out into the landscape. We can expect the omphalos points for the other 71 national egregors to look just like this, though their size will most likely vary.

This Light temple is a kind of master archives for the programming, history, and destiny of the land and its people. In a sense,



*Each caretaker also has a place in Germany where their portion of the German folk soul (the ethnos) is grounded and held.*



## NATIONAL OMPHALOS POINTS

it is a hologram of the entire landmass; in the case of America's Eagle in Pennsylvania, you have in this "garlic bulb-shaped" Light temple a hologram of the entire country, its landscape features, all the subsidiary egregors and landscape angels who work under this national one. The Light temple with its 288 segments is also like a wheel, and it is both a hologram of the entire country and an access point to it, and you realize this same pattern is expressed across the U.S. as one massive wheel with 288 spokes. At a given spoke, you might see a mountain, valley, hill, river, lake—a significant geomantic feature and probably a site once known to be sacred by native peoples living near it. In addition, you will see a landscape angel (or Deva) standing in place there protecting, nurturing, and *ensouling* the landscape and its inhabitants.

Why 288 segments? This has to do with what Judaic mysticism calls the 288 Sparks. The conventional explanation is that these are the 288 primordial fallen sparks of Light; they fell into Creation out of the realm of Absolute Light (a realm called *Atziluth*) when the Supreme Being created multiple lower worlds. Sometimes this panoply of lower creation is called the Tree of Life; when the Light started to course down through the Tree and its numerous vessels for the Light (called Sefiroth), it shattered them and the sparks went everywhere. They were regarded as sparks of holiness and divine power, and as seeds in the ground.

Another rabbinical interpretation says, "The number of 288 sparks stems from the four dimensions of 72 that descended from the four forms of the name *Havayah*, 72, 63, 45, and 52." (Lubavitcher Rebbe, "I Will Write It in their Hearts," Vol. 2, Letter No. 177, 1988-2004, at: [www.sichosinenglish.org/books/letters-rebbe-2/index.html](http://www.sichosinenglish.org/books/letters-rebbe-2/index.html))

This is a bit complicated, but *Havayah* is a Divine Name for God, and outwardly signifies God's Mercy, and inwardly, refers to God's transcendent, concealed essence. It is the name of divine revelation in higher consciousness states. The four numbers, 72, 63, 45, 52, are permutations of the Name according to the Qabalistic science of gematria. At least one interpretation of the meaning of the 288 Sparks based on this is that they represent the 72 Names of God ex-

pressed in the Four Worlds or dimensions described in Qabala, from the highest, called *Atziluth*, to the material, called *Assiyah*. In an elegant mirror image, in the national omphalos point's 288 segments we have one Name with 288 permutations.

Complementing this interpretation is an observation by the Ofanim, an angelic order pivotal to all activities and interpretations of the Earth's geomantic reality. They say that across the Earth the 288 Sparks are expressed as prana distributors or energy conductors. While the Judaic model emphasizes the need to one day redeem the fallen sparks and return them to the Absolute, the Ofanim's nuance is that they are reservoirs and distributors of basic life force and spiritual power for the planet, suggesting they are perhaps sparks of spirit from the Absolute realm given out of love for the lower worlds. Technically, the prana distributors, of which there are 288 across the Earth, are a different geomantic feature than the 288 segments in the omphalos points, but the origin and function of both is largely similar—to differentiate across a spectrum a basic endowment from the Supreme Being to humanity and the Earth of Light, life, and spirit.

The national omphalos point itself sits on a larger Light structure in the form of a massive slowly revolving wheel. This is called an ofan, from the Hebrew word which means "wheel." But it's not just any kind of wheel; this one has cache for it is the Wheel of the *Merkabah*, the Hebrew name for God's Chariot, or His moving Throne. It is also the core name of the angelic order called the Ofanim whose activity is like a spinning wheel and which is in fact the wheel of the *Merkabah*. An *ofan* underlies each national omphalos point, as well as many other geomantic features across the planet.

Some geomantic writers have interpreted this *ofan* as a zodiac, which is accurate in the sense that the wheel has 12 divisions like the zodiac or horoscope according to the four conditions of matter (earth, air, water, fire) and their three valences (moving, not moving, and mutable, or in the classical Vedic



*Complementing this interpretation is an observation by the Ofanim, an angelic order pivotal to all activities and interpretations of the Earth's geomantic reality.*



## NATIONAL OMPHALOS POINTS

model, sattvic, tamasic, and rajasic). In popular jargon, this would be, for example, Taurus (an earth sign), with the energetic quality of being “fixed” (not-moving or tamasic). A more streamlined perception of the same feature would see it as a Round Table, as described in the Arthurian mythos, as a circular table with seats for 12 knights, each representing a different zodiacal sign.

In simpler terms, the Ofanim suggest we think of this as an “angelic wheel, us in dynamic motion, or as the seed or archetype of a full zodiac.” Seen clairvoyantly, the planet is a mass of wheels within wheels within wheels, all spinning, emitting great Light. “It’s how we move the Chariot across the Earth, how we make it a *Merkabah*-planet. It’s an imprint we make at many levels to energize and enthuse a system at a basic level.” We might also call these innumerable wheels *ofan* templates, they suggest, adding that “when our wheel gets grounded, touches the Earth, and starts to spin, it becomes a foundation upon which other things [geomantic features of Light] may be added.” Still another name for them is *Nimitta’s Wheels*.

*Nimitta* is a Sanskrit word used for the *Ofanim* when a more formal reference is required. It refers to an exceedingly fine point in consciousness. Two of the apparitional forms the *Ofanim* use are a Blazing Star, which is a tiny pinprick of Light, and a diamond with literally millions of facets; the latter is the *Nimitta* form, and the number of facets is 40.3 million, the same as their total manifestation package in their angelic guise. This is geomantically relevant because at the center of the *ofan* template is the *Nimitta*, a giant, multi-faceted crystal of Light; the national omphalos point and its subtle architecture sits on this much larger feature, like a jewel on a jeweled cushion.

The *ofan* template or *Nimitta* Wheel gets activated when somebody at one touches the Blazing Star within themselves (makes contact with the *Ofanim*); this incites the wheel to turn. Also, true to Ezekiel’s profound vision of the *Merkabah*, reported in the Bible, in between the wheel spokes are another family of angels called the *Hayyoth ha Chodesh*, the Holy Creatures, each with four faces, expressing the four fundamental and archetypal aspects of matter.

Stepping away a bit from the national omphalos point and its *Nimitta* Wheel, we find another geomantic feature common to all omphalos points: a dragon. Each national egregor is guarded by a dragon; the one at the U.S. egregor faces East, possibly sensing that danger comes from there. The dragon appears to be perhaps 500-1,000 feet across and the same in length; it has a long spiked tail that straddles the *Nimitta* Wheel. The same pattern is replicated at the planetary level, where Gaia, the master landscape angel or egregor for Earth, is guarded by what the Norse called the Midgard Serpent, a serpent-dragon wrapped entirely around the planet. It is the Mother of all the other planetary dragons, which number 1,066, including the ones that guard national egregors. Gaia has an additional guard in the form of an archangel called Sandalphon, who is also wrapped around the Earth, though at a more subtle level than the Midgard Serpent. His essential energetic shape is like an apple, as is the planet’s Light body, and he is with Gaia constantly as a mentor.

I mentioned at the outset of this description that the national egregor and omphalos point are involved with the dark grid overlay on the planet (see Research Report, below). That is because energies and interests inimical to the pure programming (the settings and parameters given the egregor by the Supreme Being long ago) can find ways to influence, manipulate, and even commandeer a national egregor and thus distort it from its essential purpose and divine mandate. To be able to correct these imbalances and undo the injurious tampering, it’s important to understand the geomantic architecture of the omphalos points.



*The same pattern is replicated at the planetary level, where Gaia, the master landscape angel or egregor for Earth, is guarded by what the Norse called the Midgard Serpent, a serpent-dragon wrapped entirely around the planet.*



## Research Report: THE ORIGIN OF THE DARK GRID IN ATLANTIS

The term Antichrist is one that is used a great deal these days, and usually the emphasis is fundamentalist, which means literal and narrow, as a singular, monstrosly demonic being implacably opposed to the Christ. What is not usually discussed is that the Antichrist has a geomantic expression too.

When you look at the Earth's Light body clairvoyantly, you see it has an additional layer growing into it and that this layer is black, foul-looking, and chaotic, and it reminds one of a seemingly sentient (though dementedly so) cancerous tumor. It has innumerable cords that grip the land or sacred sites and through which they pump a kind of dark sludge into the landscape. From another perspective, it looks like perhaps 1,000 flattened black octopi each with hundreds of long, snakey tendrils inserted into Light grid points all across the planet. All of this strikes one as having grown onto the original grid.

In geomantic terms, this is called the Earth's dark grid. It's "dark" because its function is to negate the Light and transmit darkness. The dark grid pertains to the Antichrist and is the antithesis to the Light grid. It weakens the benevolent effect of the Light grid and is the primary mechanism by which the Antichrist works on Earth. In this perspective, we are probably more accurate in construing the Antichrist to think of it as a pervasive, networked influence using the Earth's primary Light grid (its array of sacred sites and geomantic nodes) as access points for human and Earth reality.

As the planetary embodiment of the Antichrist, it presents forces in opposition to human cognitive freedom, truth, Light, and the Christ—again, it is not so much a "person" but a global condition facilitated by a complex, still-growing, toxic-organic dark network. It fosters attitudes of atheism, materialism, literalism, fundamentalism, and the apotheosis of science, and is opposed to clairvoyance, intuition, Nature, the body, matter, and the feminine in all aspects, especially the human soul. It is accomplished in

projecting everything away from itself, demonizing its own qualities as objectionable aspects of the outer world. In psychological language, this is projecting the Shadow out onto others to escape any personal confrontation with it. The Antichrist, through the dark grid, is extremely competent at this Shadow game.

The dark grid and its embedded Antichrist is not the result of something horrible done to us. We did it ourselves, over time and many generations of humanity. Here's one version of how that happened:

The dark grid largely is the residue of an after-death possessive state of the former civilization of Atlantis. The height of Atlantean culture manifested a highly sophisticated spiritual-consciousness technology whereby scientists and engineers were able to interact with the energies of the galaxy through a materially augmented spiritual technology. It was a combination of radar, deep space telemetry, and something like the phased-array of the Very Large Array of astronomy telescopes at Socorro, New Mexico. Not only did this system enable the Atlantean researchers to interact with the stars and their intelligences, but to subtly influence and eventually manipulate the galaxy from the Earth. Eventually, the feedback from this continual DSL connection with the galaxy destabilized Atlantis at its geological and geomantic roots and the island imploded then sank cataclysmically.

From our perspective today, we might say it was a classic case of scientists over-reaching their mandate, going way beyond the boundaries of safety and responsibility, and carrying on in a foolhardy, reckless manner oblivious of possible consequences. After the complete demise of the Atlantean landmass and all its people, many engineers in their after-death state expressed themselves as a

*(Continued on page 20)*



*The dark grid largely is the residue of an after-death possessive state of the former civilization of Atlantis.*



## THE ORIGIN OF THE DARK GRID IN ATLANTIS

psychotic collective, a kind of possessive, life-desiring, vampiric organism—a giant thought-form reaching out of the sunken continent like a malign black hand trying to claw its way back into planetary life and its former presumption of control.

This “black hand” had innumerable, unlimited fingers, and each finger sought an anchor point, a place from which to sink into a portion of Earth physical reality. Each finger was like a dark tendril seeking a grounding point so that the Atlantean engineering collective could continue to influence and manipulate Earth reality. The problem was in its after-death state, this Atlantean collective had become dark, troubled, unbalanced, and acted radically inappropriately, like angry ghosts, Earthbound, restless, even demented, spirits. They sought footholds in human reality, and they did this largely through Atlanteans who began reincarnating on Earth while maintaining their allegiance to the disincarnate group.

Eventually, many thousands of “fingers” or dark tendrils got established in the human world, in cities of power, government, commerce, and worldly or religious influence. The planet got enmeshed in the spidery dark webs emanating from the after-death state of the destroyed Atlantis; after a while, this network of tendrils or “grounded fingers” grew so large it had a shape, a planetary mass, although it was (and remains) a deformed, non-beautiful, toxic growth like a metastasized tumor. The placenta for the Earth’s dark grid and its thousands of umbilical cords is Atlantis, physically vanished but still psychically very active.

Now it is the planetary Shadow, humanity’s unexpiated Atlantean dark side, and the matrix for the emergence and extrapolation of the Antichrist.

One of the principal ways the Antichrist can work on people is through the national egregors, especially that of the United States, given its position in the world today. One of the first things I noticed about the U.S. egregor, based in

Western Pennsylvania (see accompanying Geomantic Highlight and the Dark Grid Mardi Gras calendar entry), is that it is reluctant to cast its attention freely in all directions. It’s gaze seems mostly fixed on the East, which of course is the site of Washington, D.C. But it is also the direction of the sunken Atlantean continent.

Some metaphysical sources suggest Bedloe’s Island in New York City harbor, the home of the Statue of Liberty, was once the western gate of Atlantis. With the demise of Atlantis, the astral effect and extent of that continent has energetically flooded its western boundary and strongly influences most of the eastern seaboard, especially from about Virginia up to Ontario and as far west as Pennsylvania. These areas of course were among North America’s first to drive out the Native Americans and to begin habitation with no understanding of the geomantic protocols of maintaining the land. The U.S. egregor, the Eagle, wants to be looking west, at least more often, for this lies beyond the Atlantean shadow on the land. It is also the direction most likely to first free itself from the dark grid influences, specifically, the area west of the Rocky Mountains. Whatever positive destiny the United States might have and for which the Eagle was commissioned long ago by the Supreme being to help it manifest, it will likely flower first in the west and then move slowly eastward in conjunction with the removal of the dark grid influences from the land.

While the Great White Brotherhood will not remove the dark grid from the Earth without significant human involvement, they will certainly help wherever possible. Our participation in this great century-long project—Saint Germain, a Ray Master of the Great White Brotherhood, suggests that their current estimation is the entire 21<sup>st</sup> century will be required to dissolve the Earth’s dark grid—is urgently required by the



*Some metaphysical sources suggest Bedloe’s Island in New York City harbor, the home of the Statue of Liberty, was once the western gate of Atlantis.*



## THE ORIGIN OF THE DARK GRID IN ATLANTIS

Earth; in fact, there is no way we (and other nations too) may reach our presumed benevolent destiny without doing so.

Implicit in this discussion is some sense of present day agency behind the dark grid activities. Generally, the dark grid and Antichrist agenda serve the interests of most political organizations and governments as well as that of most religions, especially ones that today have a global reach and millions of followers. It is appropriate that the Antichrist would hide behind the Christ, or even assume the guise of the Christ: what better camouflage? The widespread suspicion of some type of shadow government, secret government, or government behind the apparent governments is relevant here, whether it be a cabal of business interests, military leaders, or other. The existence and mechanism of the dark grid suits the agenda of such groups excellently, and their activities perpetually feed and strengthen it too.

It's to our national egregors we must put our attention, for they are among the dark grid's first and primary targets. The logic is simple: If you control the national egregor or even can significantly influence it, then you control the people and the land. Here are some impressions I collected in late 2004 when I first participated in some cleansing work on the U.S. Eagle under the supervision of Ray Master Saint Germain, America's unofficial patron saint, benefactor, and leader.

The Eagle's eyes have black scales or tiles all over them, possibly 100 per eye, effectively blinding it. These tiles have magical glyphs written on them, as a sign of black magic workings. Thus, the Eagle cannot see or it sees very poorly, as if through astigmatism which acts as a filter to distort reality in accordance with the agenda of the dark grid interests who placed the scales. The Eagle at that time was also intensely "stained" with residual Atlantean energy; it was a kind of oppressive taint or generational "curse" that weighed it down and wearied it. In general terms, the Eagle "felt" estranged and alienated from its context (the American ethnos) and from

its authentic spiritual connections to higher levels of consciousness (the egregors for continents and the entire planet, as well as the angelic hierarchy and Supreme Being). This was due in large measure to the number and types of dark grid filters placed in its "body."

More recently, in late December 2005, I gathered more impressions along these lines. The Eagle had dozens of dark grid cords or tendrils-plugged into it around the feet and upon the geomantic base it stands on (called a national omphalos point). There were as many cords also plugged into its head and neck, and the Eagle's head itself was encased in a huge black, semi-transparent cube filled with cubes, with hundreds of unwholesome spirit beings within each cube.

The Eagle as a national egregor is both an angelic being who normally stands up in a landscape, but who can cast a strong shadow over a specific portion of landscape such that you could say one place corresponds to its head, another to its shoulders, and another its feet. Given this, then, about two dozen black cords were strapped over the Eagle's back like tent ropes, tying him down to the ground, preventing movement. Into the platform upon which the Eagle stands were inscribed perhaps eight black magic symbols; each represented a type of malevolent energy influence and also was a reservoir for more of the same, so that the Eagle for some time had been continuously receiving a dark grid IV-drip infusion through these glyphs. Some of them involved duplicity between dark grid interests (essentially humans working in what Rudolf Steiner once called Black Brotherhoods) and extraterrestrials (aliens) in support of controlling the Eagle and the United States and severely limiting its growth in Light.

Inside the Eagle's "head" is a gold band that contains information; without being overly literal about this, let me say this gold band contains the egregor's basic program-

*(Continued on page 22)*



*It's to our national egregors we must put our attention, for they are among the dark grid's first and primary targets.*



## THE ORIGIN OF THE DARK GRID IN ATLANTIS

ming and instructions as given it by the Supreme Being when He commissioned this angelic being to serve as America's national egregor. The programming appeared to me as a great deal of golden pictures, scenarios, illustrated and still audible conversations between it and the Supreme Being. However, some foreign programming had been inserted into this otherwise pure place. That programming, to me, looked like a black axle joining two black wheels, all of it two feet long, again with black magic symbols and glyphs all over it.

These are some examples of how the dark grid or Antichrist can interfere with a national egregor. The good news is that every feature I have described can be undone, in fact, has already been undone and wholesome, healing energy has been infused into the Eagle by the Great White Brotherhood, the angelic realm, and Supreme Being to fill in the places where the dark grid energy had commandeered its "body" and life.

The status of an astral Eagle in Western Pennsylvania may seem remote to our everyday concerns, but since it maintains the ethnos of what it is to be *American* in its pure form and grounds, protects, and administers this quality in the landscape designed for it, whatever happens to the national egregor happens to each of us. We may be aware of it in our waking hours, or not; perhaps it seeps into our psyche, body, and material reality subliminally, but insofar as we are American, that is, with a soul affiliation to the land, its egregor, and mission, we cannot escape it. We all share in the life of our national egregor; if it is oppressed by dark grid influences, so are we; if it receives a massive healing from the spiritual world, then so do we, and eventually we will notice a shift in the ambiance of everything *American*. This ambiance is several layers *beneath* or more subtle than the external political and sociocultural activities that may take place in America or any other country. This is at the profound level where ethnos feeds into the land in a continuous reciprocal loop over time.

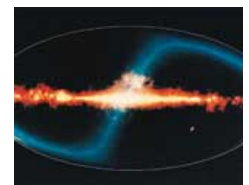
What is needed today is to "free the egregors of all the nations from the literal grip of the dark grid," says Saint Germain. It's encouraging to know that in this great planetary project of freeing and healing the national egregors we have not only the unstinting help of the spiritual world, but that of the numerous ancestral spirits of each landscape. In the U.S., it is the spirits of the Native Americans who lived here over the centuries; a great host of Indian ancestors are on hand to help the work of freeing the Eagle; they have in fact already participated in all the healing work I have described. While living, they were the land's caretakers, the first generation of American ethnos exemplars we might say; their commitment is long term, and they remain to help the living today by working from the spiritual world.

All the national egregors of Earth received an intense blessing and healing during the night of December 31, 2005, and continuing through the first day of 2006 until about dusk. This date had been earmarked by this newsletter (see the December 2005 issue) as Dog-Star Day, a time at which every year the star Sirius in Canis Major (the Greater Dog) reaches its midheaven position and place of greatest direct influence on the Earth.

During the night, Sirius worked on all the national egregors. Here is one way to picture it: One of the personified guises of Sirius as a celestial star-being is Shiva, the transcendent destroyer god from Hinduism. Shiva is commonly depicted as a four-armed human figure dancing ecstatically within a circle of flames. The ring of fire at one level is the Milky Way galaxy itself, seen from just outside it. Shiva dances in the ring because he is the Hound of Heaven (elsewhere known as Cerberus and Anubis) charged with protecting the galaxy from inimical outside energies. He is the Lord of the Underworld, because the Underworld is actually everything inside the galaxy, beyond the fiery ring. Shiva-Sirius



*All the national egregors of Earth received an intense blessing and healing during the night of December 31, 2005, and continuing through the first day of 2006 until about dusk.*



## THE ORIGIN OF THE DARK GRID IN ATLANTIS

is the gatekeeper for the transition from the Absolute to the differentiated, that is, from the extra-galactic space and the inner galactic body. He is a swinging door between the transcendent and the manifest.

Sirius imparted this vision and reality to the egregors during Dog Star Day. In a sense, each national omphalos point and its dragon protector and egregor was within a temporarily present ring of fire at the site with Shiva-Sirius dancing within it, sharing the ecstasy of the cosmic view. For each egregor, this day was a time-out from bearing the weight of the dark grid programming and the slow pace of human conscious evolution and awakening within the particular landscape it oversees. For the U.S., for example, it was “the Eagle’s *darshan* with Shiva, a refresher course in basic cosmic realities,” Saint Germain commented afterwards. *Darshan* is a word from Hindu spirituality that refers to an audience with a holy person, when their enlightenment is a pure environment you sit within.

One of the immediate results of this *darshan* of the egregors with Shiva was a release of a layer of toxicity from its body. This looked like, variously, a fierce air storm blowing through the area or a fog bank so thick you could not see through it, and it felt like a massive field of distraction and chaos. Accentuating this latter quality was the fact that a large portion of humanity was busy that night celebrating New Year’s Eve, creating a mass psychic event that significantly clouded the ethers and somewhat obscured the healing of the egregors. The spiritual world was doing one thing with the planet, and a large portion of the conscious life on the planet was doing something else, and the incongruence of focus between the two is typical of the situation on the Earth today.

By the morning of January 1, 2006, the ethers around the U.S. Eagle had cleared as the world party activity ended. “Now the American people have to process the changes in their egregor from this Sirius focus and thus to their reality,” said Saint Germain. “They will also have to negotiate

the resistance of the dark grid interests across the land who will not have appreciated this event. The dark grid will resume assaulting the Eagle again [and the other national egregors], but eventually we will cross a threshold where the momentum is on our side. Very soon, actually, probably within the decade.”

Saint Germain noted that what was experienced as vast clouds of distraction blanketing the Earth and the egregors was in part “the result of the massive burn-off of dark energies from the Eagle through the lilac flame.” Lilac flames burned around all the national egregors throughout Dog-Star Day; the lilac flame is administered by Saint Germain as a potent agent for the transmutation of negative energies.

One of the big issues Americans will have to process, sooner or later, is what Saint Germain calls “the dark father.” Psychologically, this is a refusal to confront the national shadow, but it also corresponds to a certain quality in the American psyche or ethnos, the seeming inability to see the dark sides of the father at any level, whether it is the father in a family or the President, or by extension the government itself. “Americans need to see beyond their borders to witness the effects of this dark father on the world, effects which have been kept from them by the government.” Beginning on December 20, 2005, the evening of the Wild Hunt (see the December 2005 issue), Saint Germain and his Great White Brotherhood colleagues began a new phase of “collecting souls to work with us in the great, urgent project of de-obscuring the Eagle’s eyes so it can help Americans do the same.”

The angels were busy too with the egregors and had no qualms about exuding a definite party atmosphere. “We were out in great numbers last night to brighten the egregors,” commented the Ofanim, an angelic order intimately involved in every as-

*(Continued on page 24)*



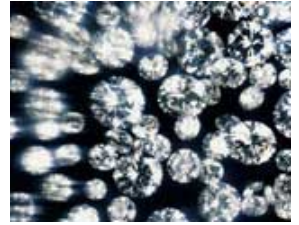
*One of the big issues Americans will have to process, sooner or later, is what Saint Germain calls “the dark father.”*



---

## THE ORIGIN OF THE DARK GRID IN ATLANTIS

pect of the Earth's Light grid. "It was a kind of party for us. We were weaving a Nimitta crown of Light for each egregor. It was like fireworks, but these will last longer." A Nimitta crown is like a crystalline sphere with millions of glittering facets placed over the egregor's entire body; the Nimitta is also a manifestation guise for the Ofanim in which they appear as a pure diamond with 40.3 million facets.



*We were weaving a  
Nimitta crown of  
Light for each  
egregor. It was like  
fireworks, but these  
will last longer."*

